

Building Instructions: 09_steam

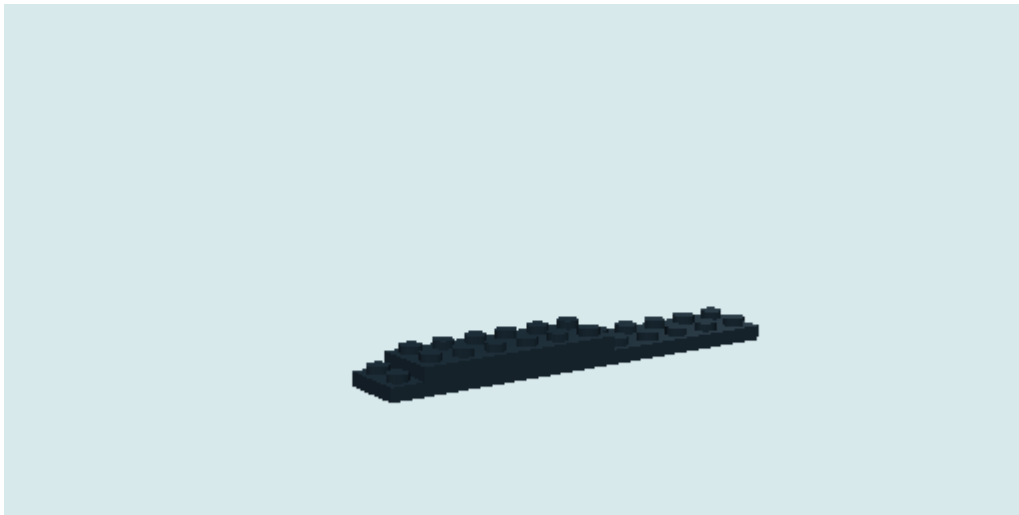


Number of bricks: 171

Download LEGO Digital Designer from

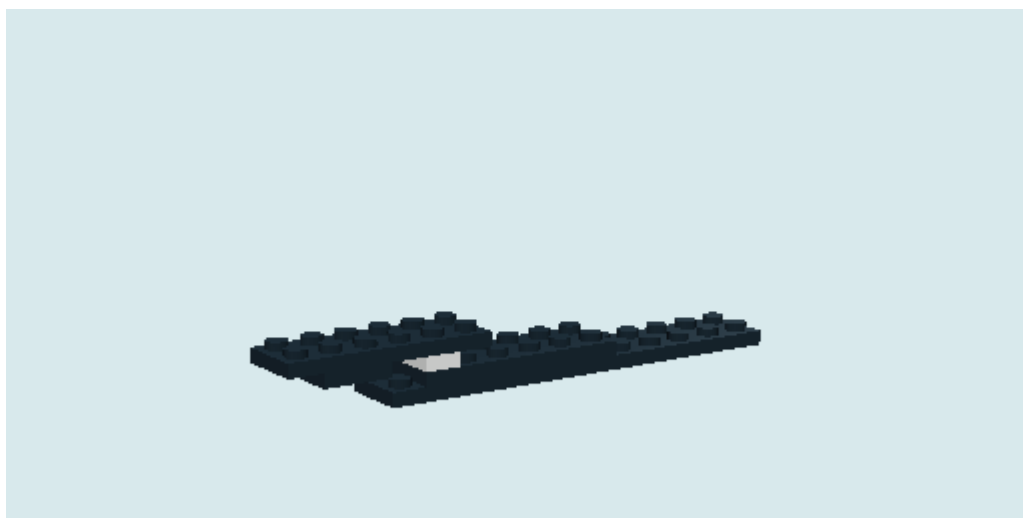
www.lego.com/ldd

Step 1

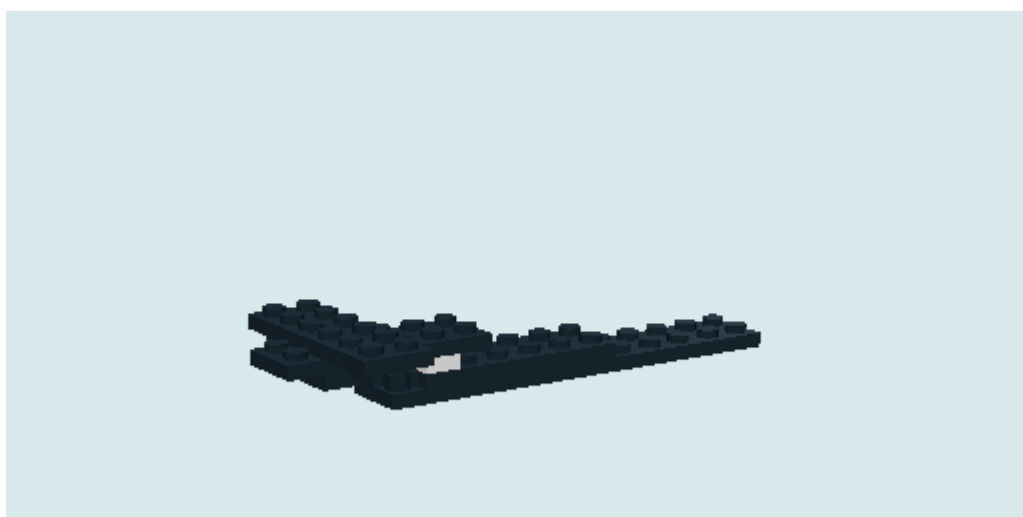
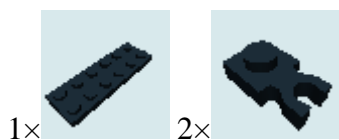


Step 2





Step 3

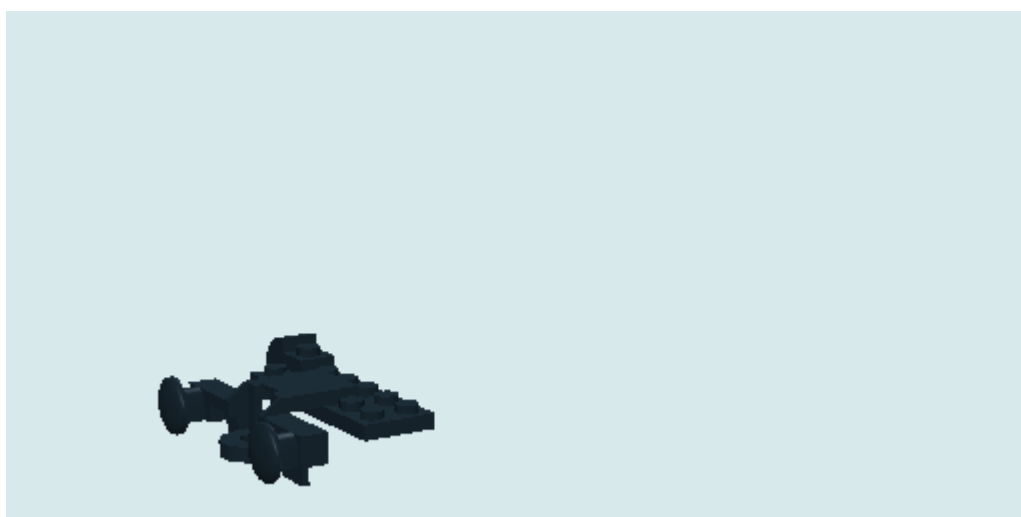
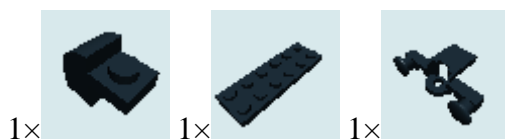


Step 4





Step 5

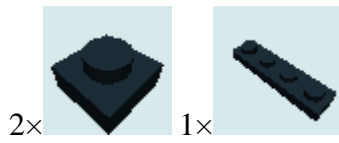


Step 6

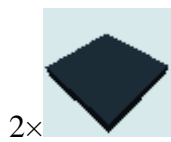




Step 7



Step 8

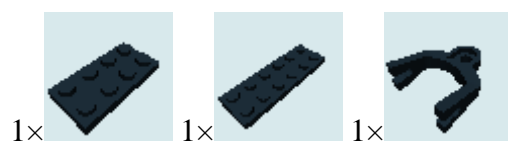




Step 9



Step 10



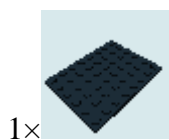
Step 11



Step 12

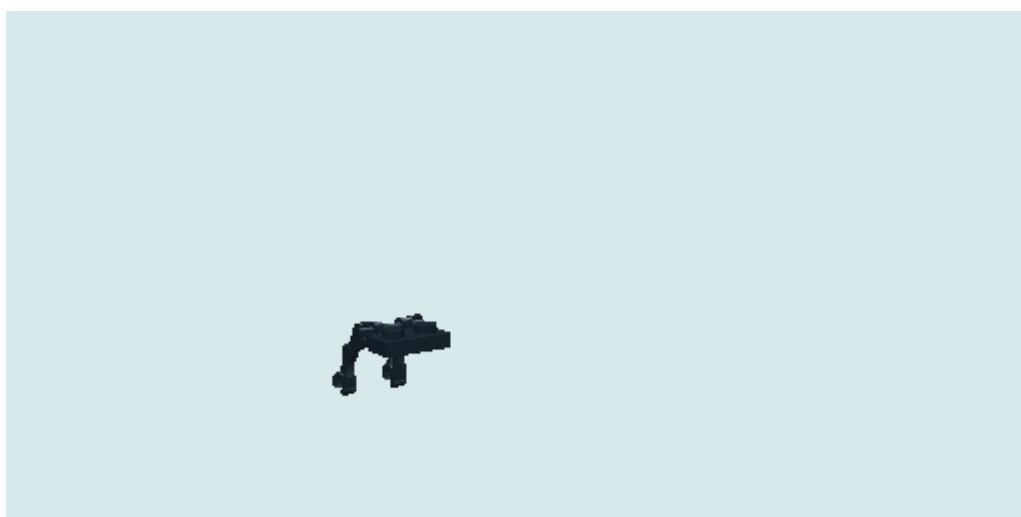
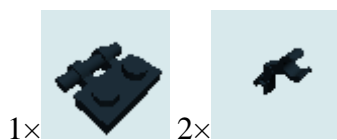


Step 13





Step 14



Step 15



Step 16



Step 17



Step 18



Step 19



3x



Step 20



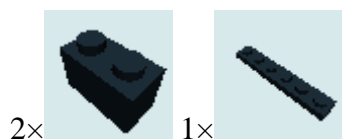
1x



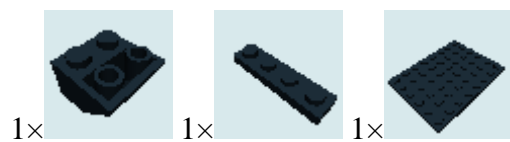
2x



Step 21

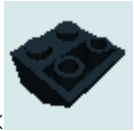


Step 22





Step 23



3x



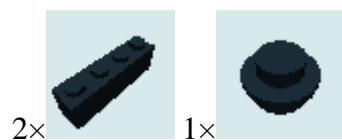
Step 24



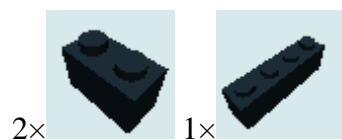
3x



Step 25

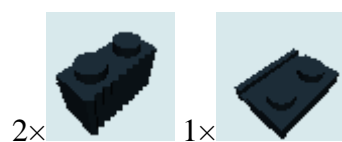


Step 26

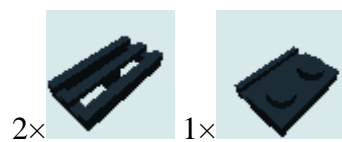




Step 27

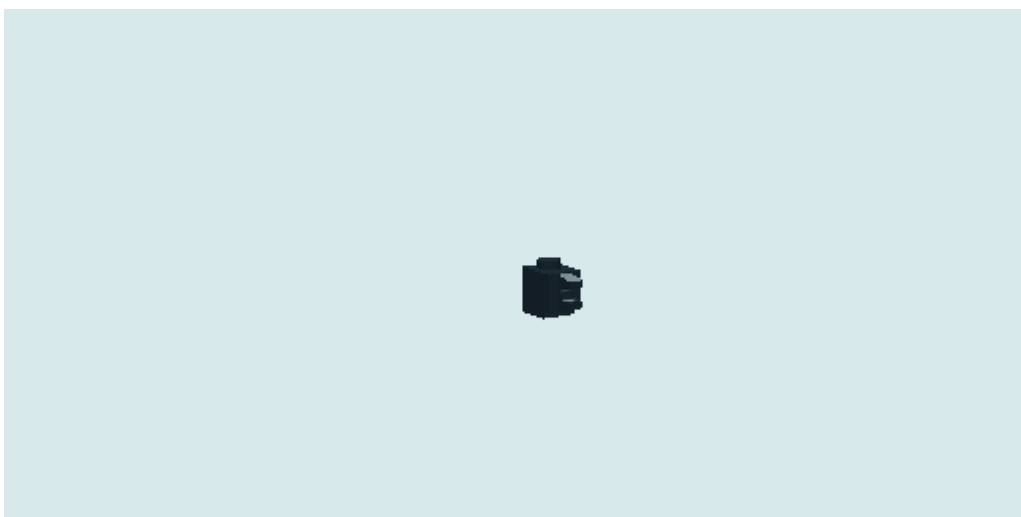
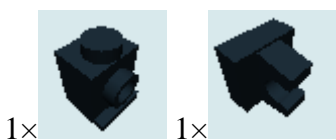


Step 28





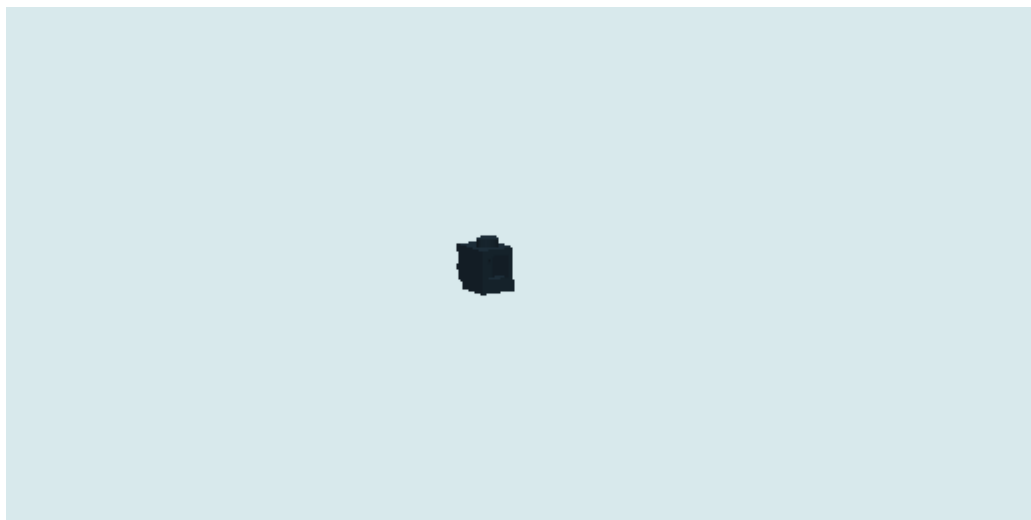
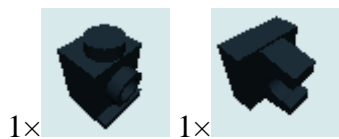
Step 29



Step 30



Step 31



Step 32



Step 33

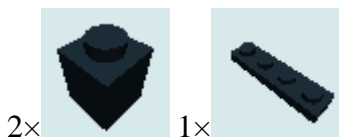




Step 34

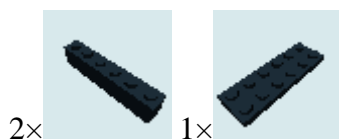


Step 35

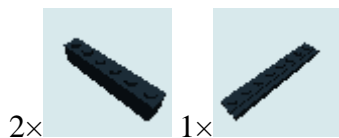




Step 36

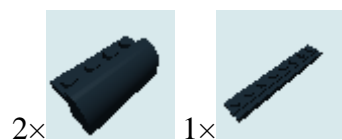


Step 37

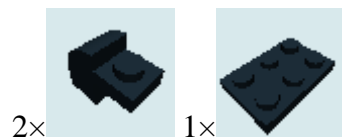




Step 38

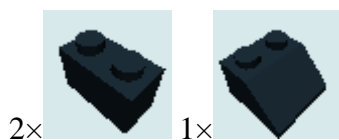


Step 39

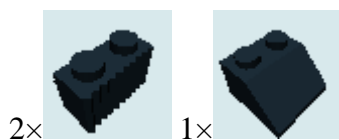




Step 40

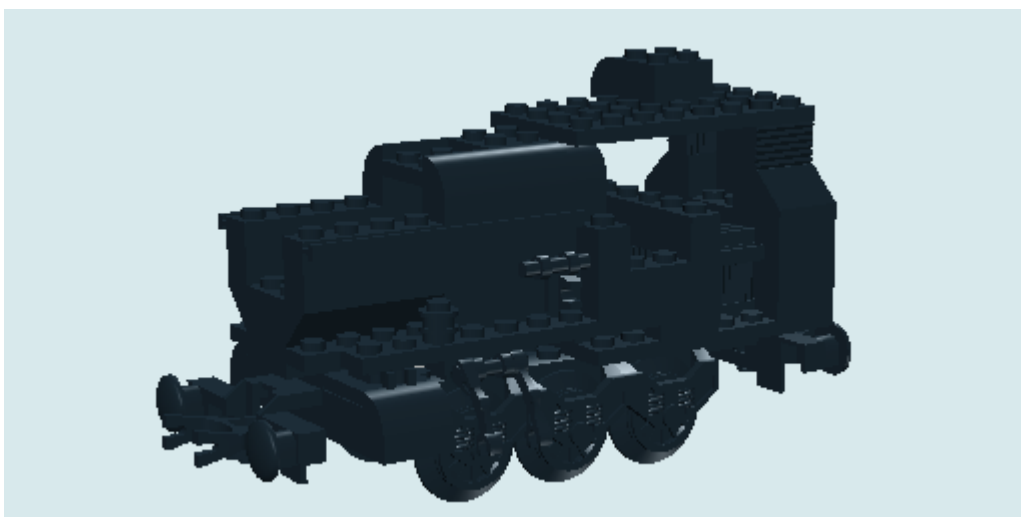


Step 41



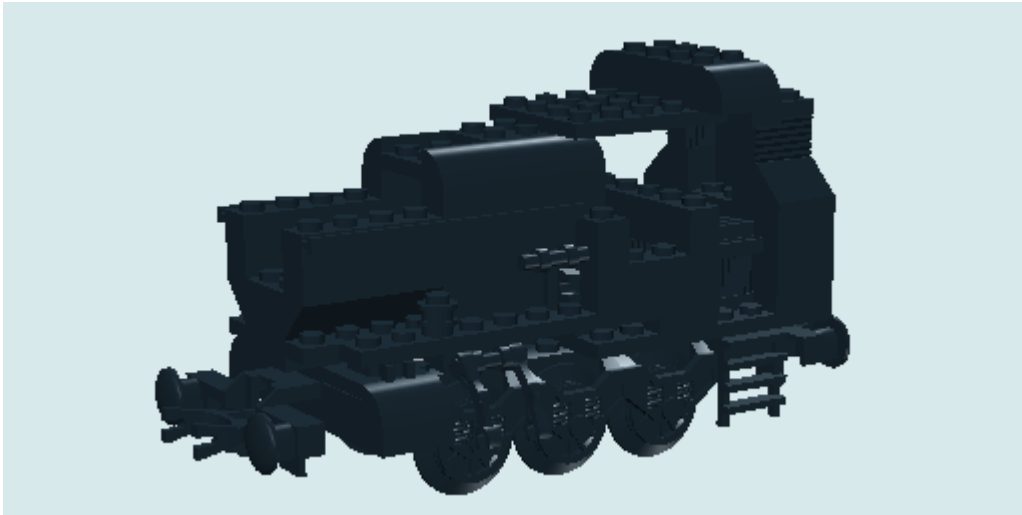


Step 42

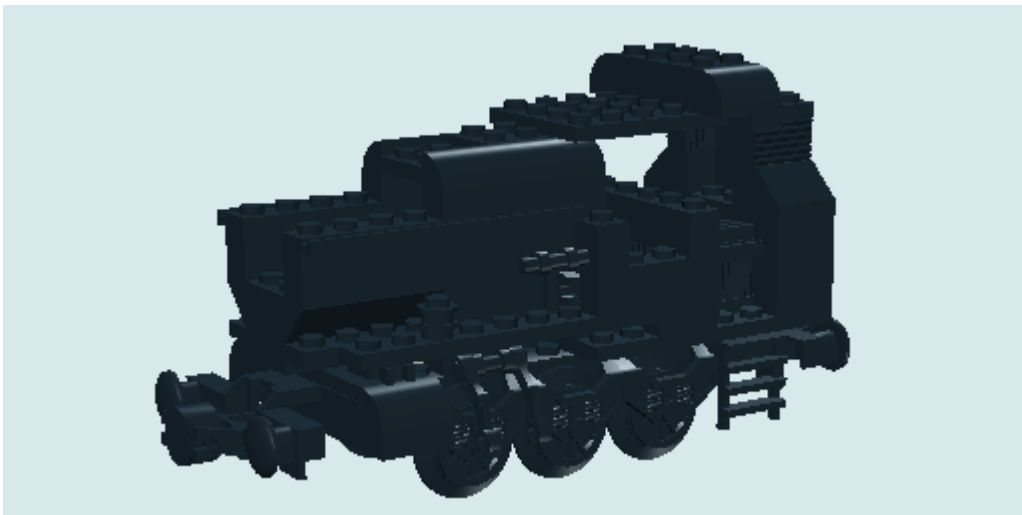
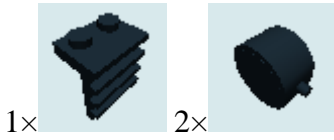


Step 43

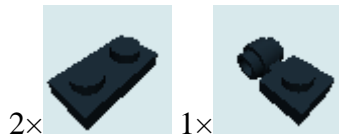




Step 44



Step 45

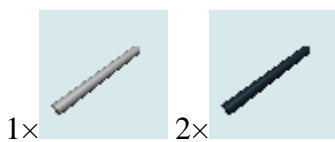




Step 46

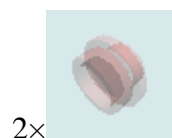


Step 47





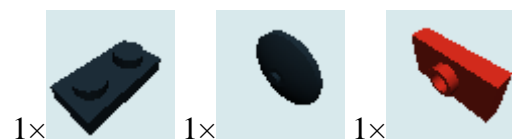
Step 48



2x



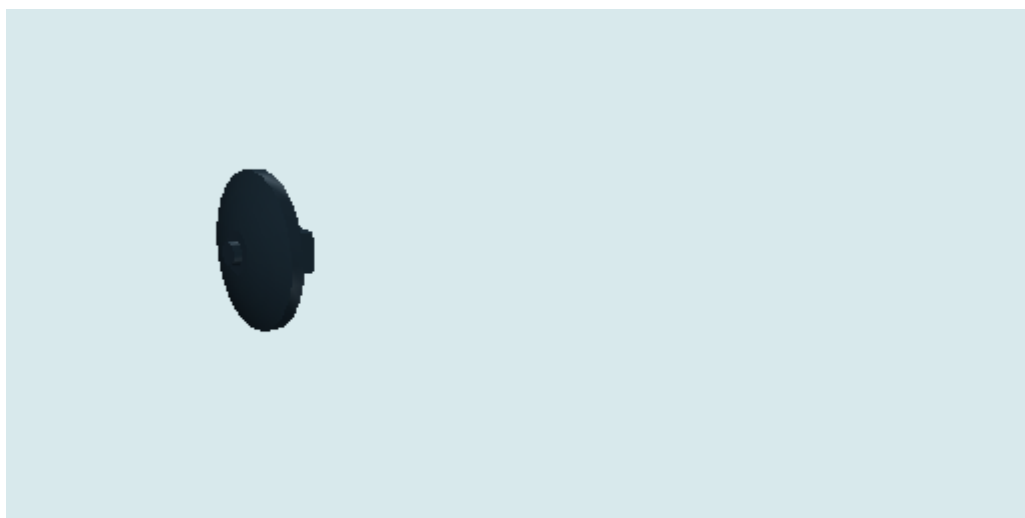
Step 49



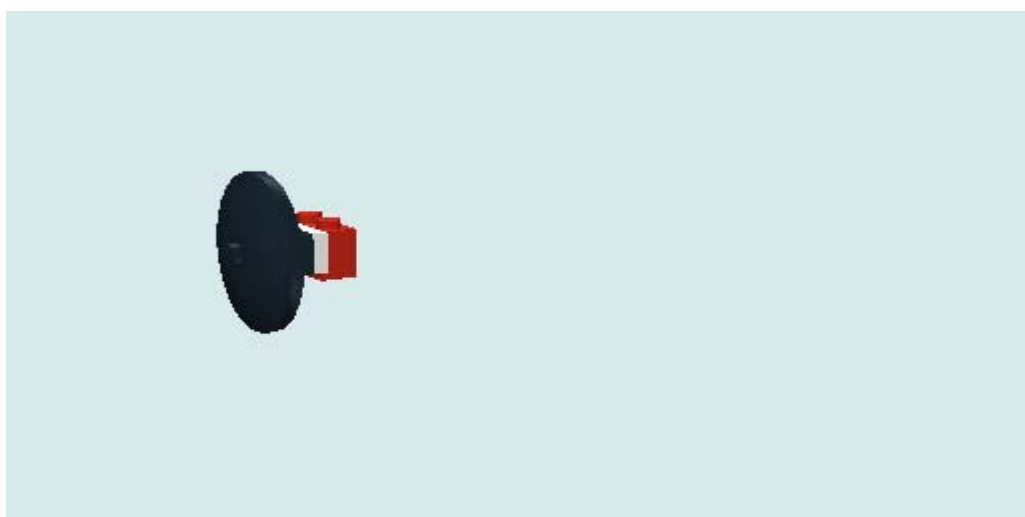
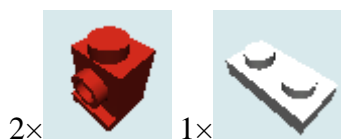
1x

1x

1x



Step 50



Step 51





Step 52



Step 53



Step 54



Step 55

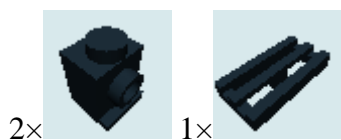


Step 56





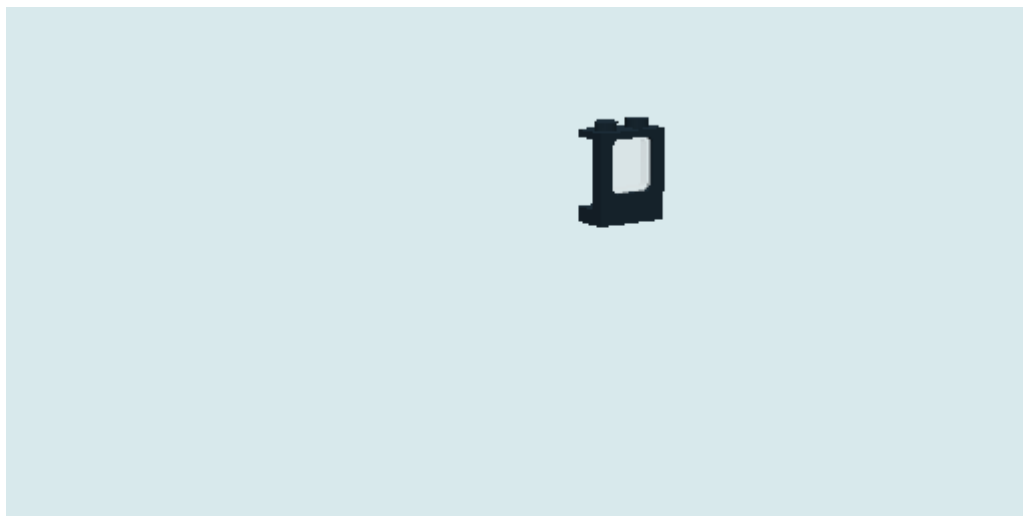
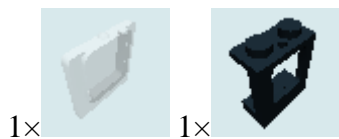
Step 57



Step 58



Step 59



Step 60

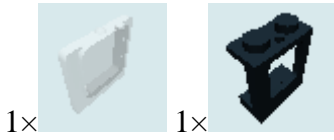


Step 61





Step 62



Step 63



Step 64



1x



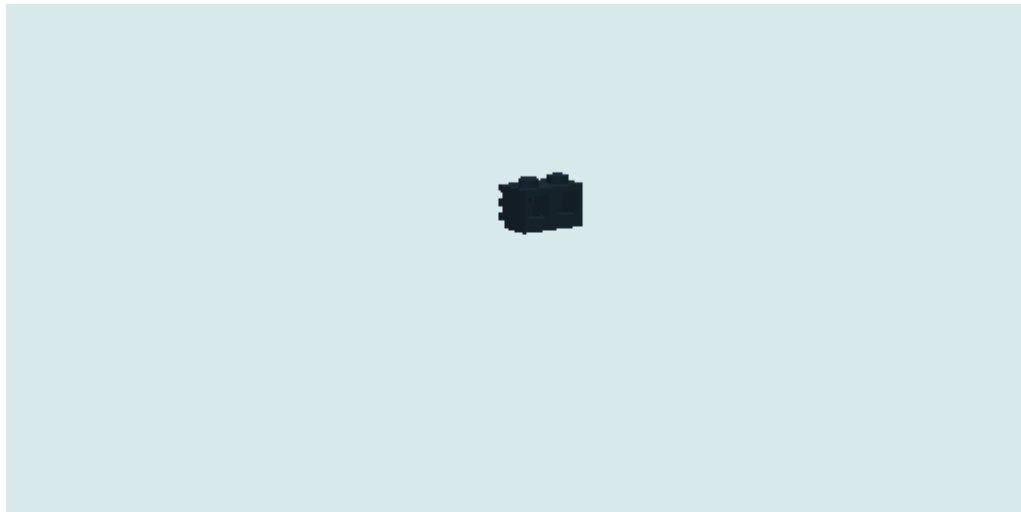
Step 65



2x



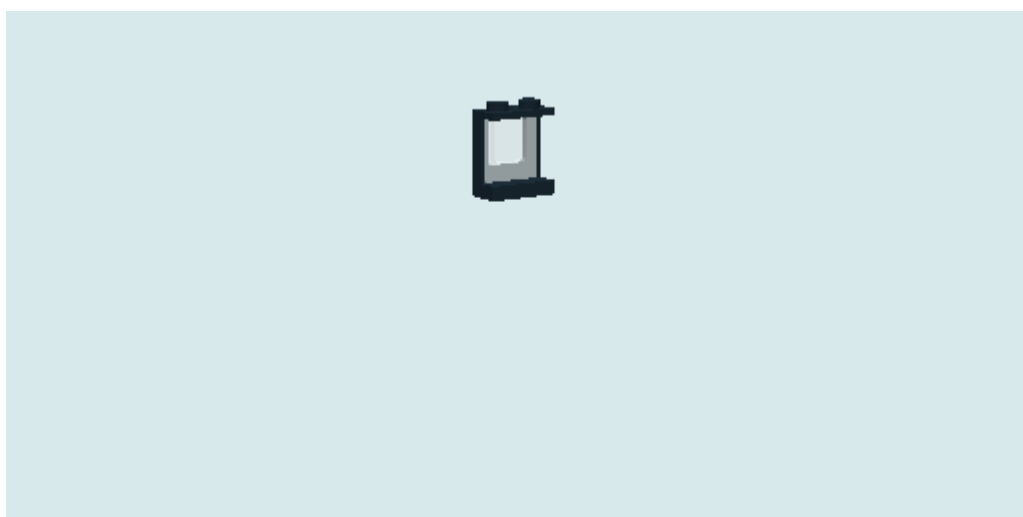
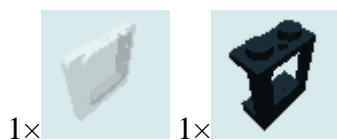
1x



Step 66



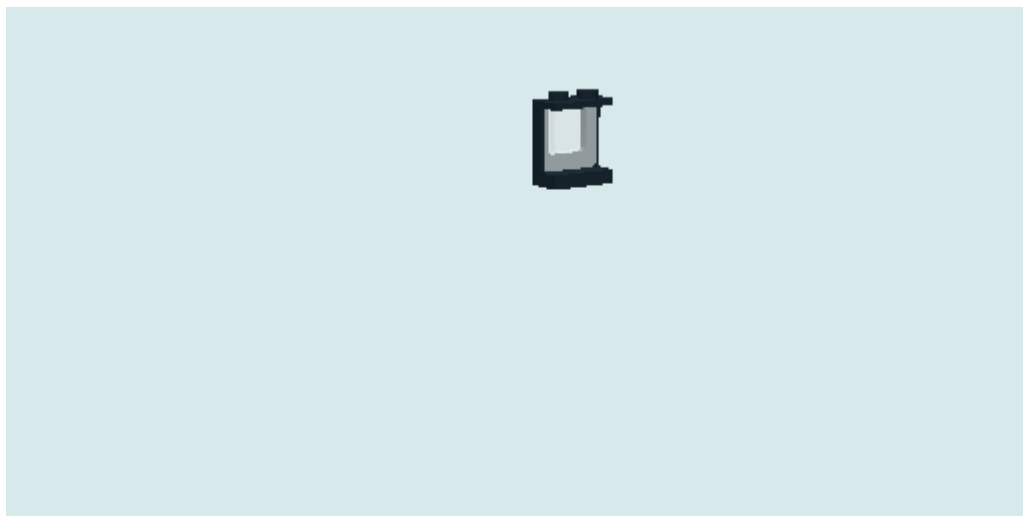
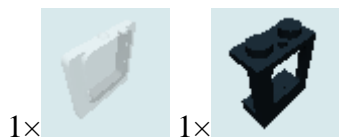
Step 67



Step 68



Step 69



Step 70

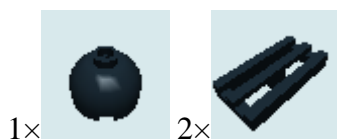


Step 71

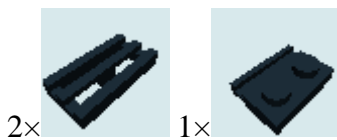




Step 72



Step 73





Step 74



1x



Step 75



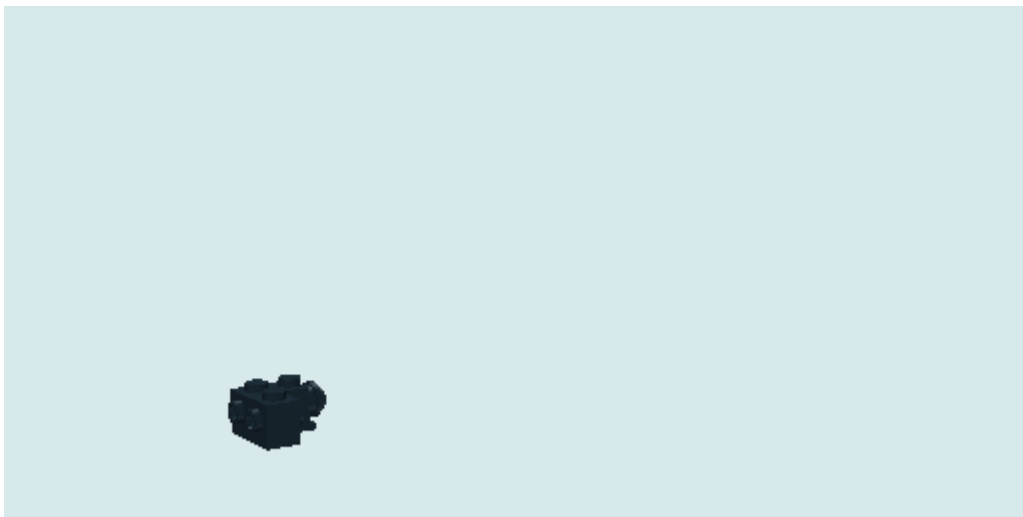
1x



1x



1x



Step 76



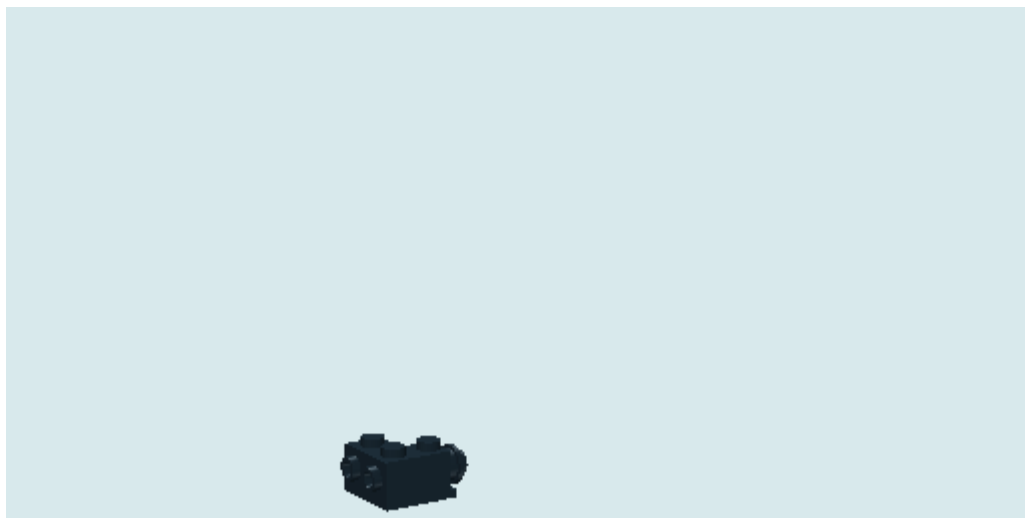
1x



Step 77



Step 78



Step 79



Step 80

